



GSK

Great speed slim collet chuck



G2.5	25,000	Ø25	C		
G value	Max RPM	Max Dia	Coolant System	Milling	Drilling

Features

- Enables balanced G2.5/a maximum of 25,000RPM machining
- Improves machining productivity by high-speed machining
- Minimized tool vibration during machining by adopting an 8-degree collet
- The collet is pressed steadily by the Swiss Made high-accuracy nut.
- Optimal machining stability
- Tool clamping range : Ø2-Ø25

NAMING	BT40	—	GSK	10	—	90
	Spindle		Great Speed Slim collet chuck	Tool Dia.		Length



Unique Design

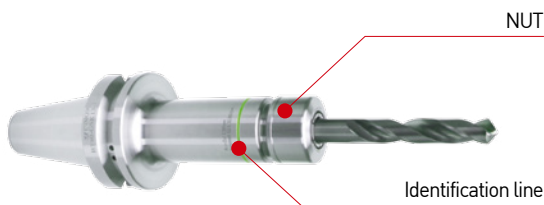
GSK	Third party
<p>Planar part fixing method</p> <p>8° HC Collet</p> <p>Nuts for high-speed rotation</p> <p>Provides strong tightening force with a 8° collet and good fixation degree based on planar part fixing method</p>	<p>Vibration due to balance instability</p> <p>Unstable balance is generated by the centrifugal force at the time of high-speed rotation</p>

Comparison of screw polishing at points of nut tightened

GSK	Third party
<p>Provides excellent reproduction precision through screw grinding</p>	<p>Unstable precision due to turning operation</p>

Special Design

Optimized for great-speed collet chucks and uniquely designed to enable easy runout measurement by designating the test bar area to the product



Spanner(optional)



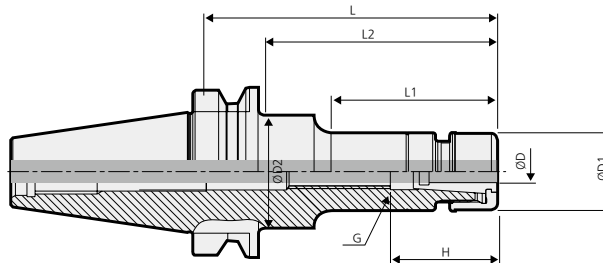
Model No.	GSK
GSK6 SPANNER	GSK6
GSK10 SPANNER	GSK10
GSK13 SPANNER	GSK13
GSK16 SPANNER	GSK16
GSK20 SPANNER	GSK20
GSK25 SPANNER	GSK25

C Internal coolant system is optional.



BT-GSK

Great slim type collet chuck



- For more information on the product features, see **92p**
- For more information on the related parts, see **97p**
- For more information on the applicable collet, see **98p**

※ If a coolant system is used, use a coolant collet.

	Model No.	ØD	L	ØD1	ØD2	L1	L2	H	COLLET/STEP	G	RPM	Kg	Package weight (Kg)
BT30	BT30-GSK6-60	3.0~6.0	60	19.5	19.5	33	33	31	HC6/1.0	M8	25,000	0.4	0.4
	BT30-GSK6-90	3.0~6.0	90	19.5	32	56	65	31	HC6/1.0	M8	25,000	0.5	0.6
	BT30-GSK10-60	2.0~10.0	60	27	27	35	35	38	HC10/1.0	M12	25,000	0.5	0.6
	BT30-GSK10-90	2.0~10.0	90	27	27	65	65	38	HC10/1.0	M12	25,000	0.6	0.7
	BT30-GSK13-60	3.0~13.0	60	35	35	36	36	43	HC13/1.0	M12	25,000	0.6	0.7
	BT30-GSK16-60	3.0~16.0	60	40	40	37	37	52	HC16/1.0	M12	25,000	0.6	0.7
	BT30-GSK16-90	3.0~16.0	90	40	40	67	67	52	HC16/1.0	M18	25,000	0.8	0.9
	BT30-GSK25-90	16.0~25.0	90	55	55	67.5	67.5	63.5	HC25/1.0	M12	25,000	1.0	1.1
BT40	BT40-GSK6-90	3.0~6.0	90	19.5	32	51	61	31	HC6/1.0	M8	20,000	1.0	1.2
	BT40-GSK6-120	3.0~6.0	120	19.5	32	60	90	31	HC6/1.0	M8	20,000	1.2	1.5
	BT40-GSK6-150	3.0~6.0	150	19.5	25	60	120	31	HC6/1.0	M8	20,000	1.2	1.4
	BT40-GSK10-90	2.0~10.0	90	27	40	48	60	38	HC10/1.0	M12	20,000	1.1	1.3
	BT40-GSK10-120	2.0~10.0	120	27	40	73	90	38	HC10/1.0	M12	20,000	1.3	1.5
	BT40-GSK10-150	2.0~10.0	150	27	34.5	73	118	38	HC10/1.0	M12	20,000	1.4	1.6
	BT40-GSK13-90	3.0~13.0	90	35	35	59	59	43	HC13/1.0	M15	20,000	1.2	1.4
	BT40-GSK16-90	3.0~16.0	90	40	40	58	58	52	HC16/1.0	M18	20,000	1.3	1.5
	BT40-GSK16-120	3.0~16.0	120	40	40	88	88	52	HC16/1.0	M18	20,000	1.5	1.7
	BT40-GSK16-150	3.0~16.0	150	40	40	118	118	52	HC16/1.0	M18	20,000	1.8	2.0
	BT40-GSK20-90	4.0~20.0	90	48	48	60	60	60	HC20/1.0	M22	20,000	1.4	1.6
	BT40-GSK20-120	4.0~20.0	120	48	48	90	90	60	HC20/1.0	M22	20,000	1.8	2.0
	BT40-GSK25-90	16.0~25.0	90	55	55	61	61	63.5	HC25/1.0	M28	20,000	1.6	1.8
	BT40-GSK25-120	16.0~25.0	120	55	55	91	91	63.5	HC25/1.0	M28	20,000	2.0	2.2

☐ Internal coolant system is optional.

Chuck

Arbor / Modular

Boring tool

Angular head

cBN/PCD

Smart factory

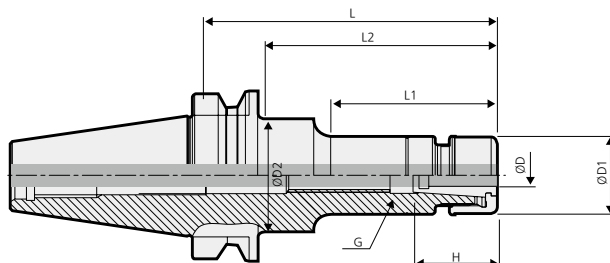
TAUMAX

OTHER



BT-GSK

Great slim type collet chuck



- For more information on the product features, see **92p**.
- For more information on the related parts, see **97p**.
- For more information on the applicable collet, see **98p**.

※ If a coolant system is used, use a coolant collet.

Model No.	ØD	L	ØD1	ØD2	L1	L2	H	COLLET	G	RPM	Kg	Package weight (Kg)
BT50-GSK6-105	3.0~6.0	105	19.5	32	55	64	31	HC6	M8	15,000	3.6	3.9
BT50-GSK6-135	3.0~6.0	135	19.5	32	60	92	31	HC6	M8	15,000	3.6	4.0
BT50-GSK6-165	3.0~6.0	165	19.5	32	60	114	31	HC6	M8	15,000	3.9	4.3
BT50-GSK10-105	2.0~10.0	105	27	27	57	57	38	HC10	M12	15,000	3.7	4.0
BT50-GSK10-135	2.0~10.0	135	27	32	70	92	38	HC10	M12	15,000	3.7	4.1
BT50-GSK10-165	2.0~10.0	165	27	36	75	114	38	HC10	M12	15,000	4.0	4.4
BT50-GSK13-135	3.0~13.0	135	35	35	92	92	43	HC13	M15	15,000	3.9	4.3
BT50-GSK16-105	3.0~16.0	105	40	40	62	62	52	HC16	M18	15,000	3.9	4.2
BT50-GSK16-135	3.0~16.0	135	40	40	92	92	52	HC16	M18	15,000	4.1	4.5
BT50-GSK16-165	3.0~16.0	165	40	50	40	122	52	HC16	M18	15,000	4.3	4.7
BT50-GSK20-105	4.0~20.0	105	48	-	62	62	60	HC20	M22	15,000	4.1	4.4
BT50-GSK20-135	4.0~20.0	135	48	-	92	92	60	HC20	M22	15,000	4.4	4.8
BT50-GSK20-165	4.0~20.0	165	48	-	122	122	60	HC20	M22	15,000	4.9	5.1
BT50-GSK25-105	16.0~25.0	105	55	55	62	62	63.5	HC25	M28	15,000	4.2	4.5
BT50-GSK25-135	16.0~25.0	135	55	55	92	92	63.5	HC25	M28	15,000	4.6	5.0
BT50-GSK25-165	16.0~25.0	165	55	55	122	122	63.5	HC25	M28	15,000	5.1	5.5

C Internal coolant system is optional.

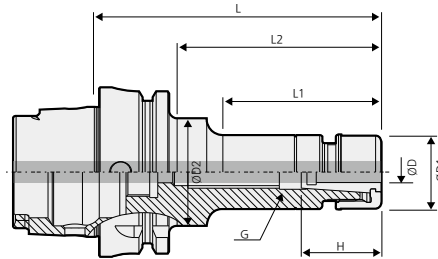


HSK-GSK

Great slim type collet chuck



DIN 69893-1	G2.5	20,000	Ø25	C		
Shank	G value	Max RPM	Max Dia	Coolant System	Milling	Drilling



- For more information on the product features, see **92p**
- For more information on the related parts, see **97p**
- For more information on the applicable collet, see **98p**

※ If a coolant system is used, use a coolant collet.

	Model No.	ØD	L	ØD1	ØD2	L1	L2	H	COLLET	G	RPM	Kg	Package weight (Kg)
HSK63A	HSK63A-GSK6-100	3.0~6.0	100	19.5	32	51	71	31	HC6	M8	20,000	0.8	1.0
	HSK63A-GSK10-105	2.0~10.0	105	27	34.5	59	76	38	HC10	M12	20,000	0.9	1.2
	HSK63A-GSK16-120	3.0~16.0	120	40	40	89	89	52	HC16	M18	20,000	1.3	1.5
	HSK63A-GSK20-120	4.0~20.0	120	48	48	93	93	60	HC20	M22	20,000	1.6	1.8
HSK100A	HSK100A-GSK6-120	3.0~6.0	120	19.5	32	69	86	31	HC6	M8	15,000	2.2	2.6
	HSK100A-GSK10-120	2.0~10.0	120	27	27	69	86	38	HC10	M12	15,000	2.3	2.7
	HSK100A-GSK16-140	3.0~16.0	140	40	40	106	106	52	HC16	M18	15,000	2.8	3.1
	HSK100A-GSK25-155	16.0~25.0	155	55	55	121	121	63.5	HC25	M28	15,000	3.6	4.0

C Internal coolant system is optional.

For separate purchase

Internal coolant system



Classification by shank

HSK50	HSK50A-CNS
HSK63	HSK63A-CNS
HSK100	HSK100A-CNS

Chuck

Arbor / Modular

Boring tool

Angular head

cBN/PCD

Smart factory

TAUMAX

OTHER

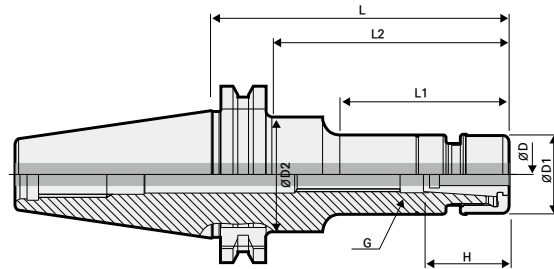


SK-GSK

Great slim type collet chuck



DIN69871 -1A/B	G2.5	20,000	Ø25	C	Milling	Drilling
Shank	G value	Max RPM	Max Dia	Coolant System	Milling	Drilling



- For more information on the product features, see **92p**.
- For more information on the related parts, see **97p**.
- For more information on the applicable collet, see **98p**.

※ If a coolant system is used, use a coolant collet.

	Model No.	ØD	L	ØD1	ØD2	L1	L2	H	COLLET	G	RPM	Kg	Package weight (kg)
SK40	SK40-GSK6-60	3.0~6.0	60	19.5	32	-	-	31	HC6	M8	20,000	0.8	1.0
	SK40-GSK6-90	3.0~6.0	90	19.5	32	51	61	31	HC6	M8	20,000	1.0	1.2
	SK40-GSK10-90	2.0~10.0	90	27	40	48	60	38	HC10	M12	20,000	1.1	1.3
	SK40-GSK10-150	2.0~10.0	150	27	34.5	73	118	38	HC10	M12	20,000	1.3	1.6
	SK40-GSK16-90	3.0~16.0	90	40	40	58	58	52	HC16	M18	20,000	1.2	1.4
	SK40-GSK16-150	3.0~16.0	150	40	40	118	118	52	HC16	M18	20,000	1.7	2.0
	SK40-GSK20-90	4.0~20.0	90	48	48	60	60	60	HC20	M22	20,000	1.3	1.5
	SK40-GSK25-90	16.0~25.0	90	55	55	61	61	63.5	HC25	M28	20,000	1.3	1.5
SK50	SK50-GSK6-105	3.0~6.0	105	19.5	32	55	64	31	HC6	M8	15,000	3.1	3.4
	SK50-GSK6-165	3.0~6.0	165	19.5	32	60	114	31	HC6	M8	15,000	3.3	3.7
	SK50-GSK10-105	2.0~10.0	105	27	27	57	57	38	HC10	M12	15,000	3.2	3.5
	SK50-GSK10-165	2.0~10.0	165	27	36	75	114	38	HC10	M12	15,000	3.4	3.8
	SK50-GSK16-105	3.0~16.0	105	40	40	62	62	52	HC16	M18	15,000	3.4	3.7
	SK50-GSK16-165	3.0~16.0	165	40	50	40	122	52	HC16	M18	15,000	3.9	4.3
	SK50-GSK20-105	4.0~10.0	105	48	40	62	62	60	HC20	M22	15,000	3.6	3.9
	SK50-GSK20-165	4.0~10.0	165	48	40	122	122	60	HC20	M22	15,000	4.3	4.7
	SK50-GSK25-105	16.0~25.0	105	55	55	62	62	63.5	HC25	M28	15,000	3.7	4.0
	SK50-GSK25-165	16.0~25.0	165	55	55	122	122	63.5	HC25	M28	15,000	4.6	5.0

C Internal coolant system is optional.



GSK SPARE PART

Great speed slim collet chuck related parts



Main components

Spare Part		Main components		
Type	Nut	Adjustment screw	Extraction tool	
Images				
Model No.				
GSK6	GN6	BN0825	DSK-6CE	
GSK10	GN10	BN1230	DSK-10CE	
GSK13	GN13	BN1230(BT30) / BN1524F(Others)	DSK-13CE	
GSK16	GN16	BN1830F	DSK-16CE	
GSK20	GN20	BN2230F	DSK-20CE	
GSK25	GN25	BN2838F	DSK-25CE	

※ BN1524F screws are used for HSK63A-GSK20-120.

※ BN1830F screws are used for SK40-GSK20-90.

For separate purchase

Spare Part		For separate purchase	
Images	Applicable chuck	Spanner Model No.	
	GSK6	GSK6 SPANNER	
	GSK10	GSK10 SPANNER	
	GSK13	GSK13 SPANNER	
	GSK16	GSK16 SPANNER	
	GSK20	GSK20 SPANNER	
	GSK25	GSK25 SPANNER	

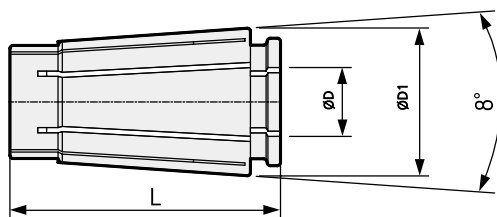


HC COLLET

HC Slim collet (General & precision type)



For separate purchase



Model No.	ØD1	L	MAX. ØD	Clearance	General	Precision (P)
HC6 ØD(P)	10.5	25.0	6.0	1.0	5 μ m	3 μ m
HC10 ØD(P)	15.6	30.5	10.0	1.0	5 μ m	3 μ m
HC13 ØD(P)	20.1	39.0	13.0	1.0	5 μ m	3 μ m
HC16 ØD(P)	24.6	45.0	16.0	1.0	5 μ m	3 μ m
HC20 ØD(P)	29.2	54.3	20.0	1.0	5 μ m	3 μ m
HC25 ØD(P)	35.7	57.0	25.0	1.0	5 μ m	3 μ m

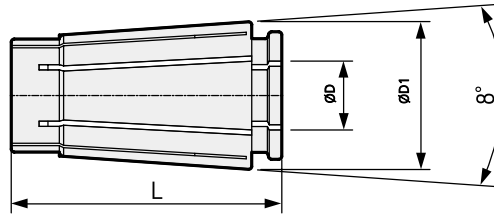
Order Example · General type - **Order as HC16-8.0**
 · Precision type - **Order as HC16-8.0P**

• For more information on the detailed specifications, see **98p**.



HC COLLET

HC slim collet (general type)



	Model No.	ØD1	L	ØD	Clearance	Accuracy	
HC6	HC6-3.0	10.5	25.0	3.0	1.0	5µm	
	HC6-4.0	10.5	25.0	4.0	1.0	5µm	
	HC6-5.0	10.5	25.0	5.0	1.0	5µm	
	HC6-6.0	10.5	25.0	6.0	1.0	5µm	
	HC10-2.0	15.6	30.5	2.0	1.0	5µm	
HC10	HC10-3.0	15.6	30.5	3.0	1.0	5µm	
	HC10-4.0	15.6	30.5	4.0	1.0	5µm	
	HC10-5.0	15.6	30.5	5.0	1.0	5µm	
	HC10-6.0	15.6	30.5	6.0	1.0	5µm	
	HC10-7.0	15.6	30.5	7.0	1.0	5µm	
	HC10-8.0	15.6	30.5	8.0	1.0	5µm	
	HC10-9.0	15.6	30.5	9.0	1.0	5µm	
	HC10-10.0	15.6	30.5	10.0	1.0	5µm	
	HC13	HC13-3.0	20.1	39.0	3.0	1.0	5µm
		HC13-4.0	20.1	39.0	4.0	1.0	5µm
HC13-5.0		20.1	39.0	5.0	1.0	5µm	
HC13-6.0		20.1	39.0	6.0	1.0	5µm	
HC13-7.0		20.1	39.0	7.0	1.0	5µm	
HC13-8.0		20.1	39.0	8.0	1.0	5µm	
HC13-9.0		20.1	39.0	9.0	1.0	5µm	
HC13-10.0		20.1	39.0	10.0	1.0	5µm	
HC13-11.0		20.1	39.0	11.0	1.0	5µm	
HC13-12.0		20.1	39.0	12.0	1.0	5µm	
HC13-13.0		20.1	39.0	13.0	1.0	5µm	
HC16		HC16-3.0	24.6	45.0	3.0	1.0	5µm
		HC16-4.0	24.6	45.0	4.0	1.0	5µm
	HC16-5.0	24.6	45.0	5.0	1.0	5µm	
	HC16-6.0	24.6	45.0	6.0	1.0	5µm	
	HC16-7.0	24.6	45.0	7.0	1.0	5µm	
	HC16-8.0	24.6	45.0	8.0	1.0	5µm	
	HC16-9.0	24.6	45.0	9.0	1.0	5µm	
	HC16-10.0	24.6	45.0	10.0	1.0	5µm	
	HC16-11.0	24.6	45.0	11.0	1.0	5µm	
	HC16-12.0	24.6	45.0	12.0	1.0	5µm	
	HC16-13.0	24.6	45.0	13.0	1.0	5µm	
	HC16-14.0	24.6	45.0	14.0	1.0	5µm	
	HC16-15.0	24.6	45.0	15.0	1.0	5µm	
	HC16-16.0	24.6	45.0	16.0	1.0	5µm	

	Model No.	ØD1	L	ØD	Clearance	Accuracy
HC20	HC20-4.0	29.2	54.3	4.0	2.0	5µm
	HC20-6.0	29.2	54.3	6.0	2.0	5µm
	HC20-8.0	29.2	54.3	8.0	2.0	5µm
	HC20-10.0	29.2	54.3	10.0	2.0	5µm
	HC20-12.0	29.2	54.3	12.0	2.0	5µm
	HC20-14.0	29.2	54.3	14.0	2.0	5µm
	HC20-16.0	29.2	54.3	16.0	2.0	5µm
	HC20-18.0	29.2	54.3	18.0	2.0	5µm
	HC20-20.0	29.2	54.3	20.0	2.0	5µm
	HC25	HC25-16.0	35.7	57.0	16.0	1.0
HC25-17.0		35.7	57.0	17.0	1.0	5µm
HC25-18.0		35.7	57.0	18.0	1.0	5µm
HC25-19.0		35.7	57.0	19.0	1.0	5µm
HC25-20.0		35.7	57.0	20.0	1.0	5µm
HC25-21.0		35.7	57.0	21.0	1.0	5µm
HC25-22.0		35.7	57.0	22.0	1.0	5µm
HC25-23.0		35.7	57.0	23.0	1.0	5µm
HC25-24.0		35.7	57.0	24.0	1.0	5µm
HC25-25.0		35.7	57.0	25.0	1.0	5µm

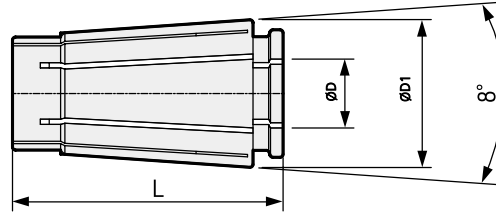
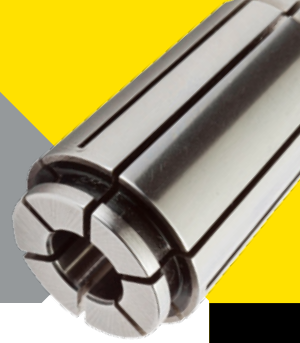
Order Example · General type - Order as **HC16-8.0** · Precision type - Order as **HC16-8.0P**

※ Please contact us about sizes other than the model nos.



HC COLLET

HC slim collet (precision type)



	Model No.	ØD1	L	ØD	Clearance	Accuracy	
HC6(P)	HC6-3.0P	10.5	25.0	3.0	1.0	3µm	
	HC6-4.0P	10.5	25.0	4.0	1.0	3µm	
	HC6-5.0P	10.5	25.0	5.0	1.0	3µm	
	HC6-6.0P	10.5	25.0	6.0	1.0	3µm	
	HC10-2.0P	15.6	30.5	2.0	1.0	3µm	
HC10(P)	HC10-3.0P	15.6	30.5	3.0	1.0	3µm	
	HC10-4.0P	15.6	30.5	4.0	1.0	3µm	
	HC10-5.0P	15.6	30.5	5.0	1.0	3µm	
	HC10-6.0P	15.6	30.5	6.0	1.0	3µm	
	HC10-7.0P	15.6	30.5	7.0	1.0	3µm	
	HC10-8.0P	15.6	30.5	8.0	1.0	3µm	
	HC10-9.0P	15.6	30.5	9.0	1.0	3µm	
	HC10-10.0P	15.6	30.5	10.0	1.0	3µm	
	HC13(P)	HC13-3.0P	20.1	39.0	3.0	1.0	3µm
		HC13-4.0P	20.1	39.0	4.0	1.0	3µm
HC13-5.0P		20.1	39.0	5.0	1.0	3µm	
HC13-6.0P		20.1	39.0	6.0	1.0	3µm	
HC13-7.0P		20.1	39.0	7.0	1.0	3µm	
HC13-8.0P		20.1	39.0	8.0	1.0	3µm	
HC13-9.0P		20.1	39.0	9.0	1.0	3µm	
HC13-10.0P		20.1	39.0	10.0	1.0	3µm	
HC13-11.0P		20.1	39.0	11.0	1.0	3µm	
HC13-12.0P		20.1	39.0	12.0	1.0	3µm	
HC16(P)	HC13-13.0P	20.1	39.0	13.0	1.0	3µm	
	HC16-3.0P	24.6	45.0	3.0	1.0	3µm	
	HC16-4.0P	24.6	45.0	4.0	1.0	3µm	
	HC16-5.0P	24.6	45.0	5.0	1.0	3µm	
	HC16-6.0P	24.6	45.0	6.0	1.0	3µm	
	HC16-7.0P	24.6	45.0	7.0	1.0	3µm	
	HC16-8.0P	24.6	45.0	8.0	1.0	3µm	
	HC16-9.0P	24.6	45.0	9.0	1.0	3µm	
	HC16-10.0P	24.6	45.0	10.0	1.0	3µm	
	HC16-11.0P	24.6	45.0	11.0	1.0	3µm	
	HC16-12.0P	24.6	45.0	12.0	1.0	3µm	
	HC16-13.0P	24.6	45.0	13.0	1.0	3µm	
	HC16-14.0P	24.6	45.0	14.0	1.0	3µm	
HC16-15.0P	24.6	45.0	15.0	1.0	3µm		
HC16-16.0P	24.6	45.0	16.0	1.0	3µm		

	Model No.	ØD1	L	ØD	Clearance	Accuracy
HC20(P)	HC20-4.0P	29.2	54.3	4.0	2.0	3µm
	HC20-6.0P	29.2	54.3	6.0	2.0	3µm
	HC20-8.0P	29.2	54.3	8.0	2.0	3µm
	HC20-10.0P	29.2	54.3	10.0	2.0	3µm
	HC20-12.0P	29.2	54.3	12.0	2.0	3µm
	HC20-14.0P	29.2	54.3	14.0	2.0	3µm
	HC20-16.0P	29.2	54.3	16.0	2.0	3µm
	HC20-18.0P	29.2	54.3	18.0	2.0	3µm
	HC20-20.0P	29.2	54.3	20.0	2.0	3µm
	HC25(P)	HC25-16.0P	35.7	57.0	16.0	1.0
HC25-17.0P		35.7	57.0	17.0	1.0	3µm
HC25-18.0P		35.7	57.0	18.0	1.0	3µm
HC25-19.0P		35.7	57.0	19.0	1.0	3µm
HC25-20.0P		35.7	57.0	20.0	1.0	3µm
HC25-21.0P		35.7	57.0	21.0	1.0	3µm
HC25-22.0P		35.7	57.0	22.0	1.0	3µm
HC25-23.0P		35.7	57.0	23.0	1.0	3µm
HC25-24.0P		35.7	57.0	24.0	1.0	3µm
HC25-25.0P		35.7	57.0	25.0	1.0	3µm

Order Example · General type - Order as **HC16-8.0** · Precision type - Order as **HC16-8.0P**

※ Please contact us about sizes other than the model nos.

Chuck

Arbor / Modular

Boring tool

Angular head

cBN/PCD

Smart factory

TAUMAX

OTHER