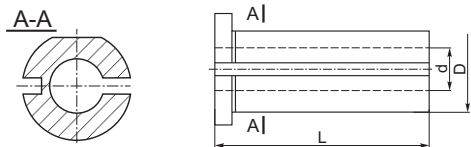


1226

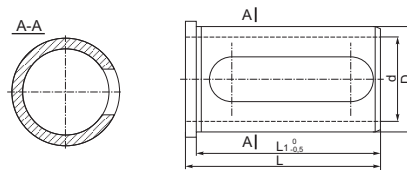
- VDI Reduzierhülse
- VDI reduction sleeve



Artikel Nr. Code No.	D	d	L
80000010	20	8	50
80000016	20	10	50
80000018	20	12	50
80000011	20	8	60
80000017	20	10	60
80000019	20	12	60
80000012	25	8	50
80000020	25	10	50
80000022	25	12	50
80000025	25	16	50
80000015	25	8	60
80000021	25	10	60
80000023	25	12	60
80000026	25	16	60
80000024	25	12	75
80000027	25	16	75
80000037	32	8	60
80000028	32	10	60
80000029	32	12	60
80000031	32	16	60
80000033	32	20	60
80000035	32	25	60
80000030	32	12	75
80000032	32	16	75
80000034	32	20	75
80000036	32	25	75
80000038	40	10	75
80000039	40	12	75
80000040	40	16	75
80000041	40	20	75
80000042	40	25	75
80000043	40	32	75
80000044	40	8	75
80000045	50	12	75
80000046	50	16	75
80000047	50	20	75
80000048	50	25	75
80000049	50	32	75
80000050	50	40	75

1247

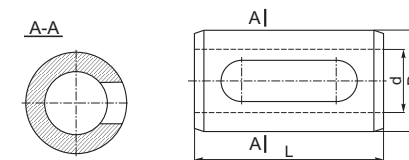
- VDI Reduzierhülse
- VDI reduction sleeve



Artikel Nr. Code No.	D	d	L	L1
800003725	32	10	64	60
800003726	32	12	64	60
800003727	32	16	64	60
800003728	32	20	64	60
800003729	32	25	64	60
800003730	40	10	74	70
800003731	40	12	74	70
800003732	40	16	74	70
800003733	40	20	74	70
800003734	40	25	74	70
800003735	40	32	74	70

1248

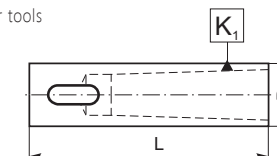
- VDI Reduzierhülse
- VDI reduction sleeve



Artikel Nr. Code No.	D	d	L
800000051	32	12	60
800000052	32	16	60
800000053	32	20	60
800000054	32	25	60

1875

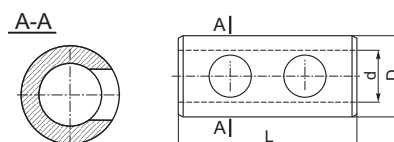
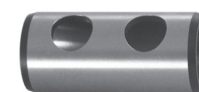
- Adapter für Werkzeuge mit MK-Schaft
- Cylindrical reduction sleeve for Morse taper tools



Artikel Nr. Code No.	D	K ₁ MK K ₁ MT	L
800003500	20	1	75
80000533	25	1	75
80000545	25	1	89
80000534	25	2	75
80000546	25	2	100
80000547	32	1	89
80003501	32	1	100
80000535	32	2	100
80000536	32	3	100
80000540	32	3	120
80000548	40	1	89
800003502	40	1	100
80000537	40	2	100
80000538	40	3	100
80000541	40	3	120
80000539	40	4	120
80000542	40	4	152
80000549	50	2	100
80000543	50	3	120
80000544	50	4	152

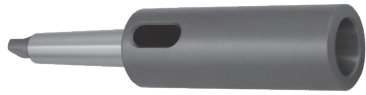
1249

- VDI Reduzierhülse
- VDI reduction sleeve



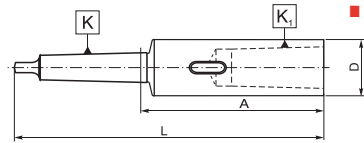
Artikel Nr. Code No.	D	d	L
800000055	20	8	48
800000056	20	10	48
800000057	20	12	48
800000058	20	16	48
800000059	25	5	55
800000060	25	8	55
800000061	25	10	55
800000062	25	12	55
800000063	25	16	55
800000064	25	18	55
800000065	25	20	55

1
2
3
4
5
6
1875
1249
1248
1247
1226



1761

- Adapterhülsen für Werkzeuge mit MK-Schaft
- Extension sleeves for Morse tapers



* Kompletzt gehärtet, innen und außen geschliffen
* completely hardened, grounded internally and externally

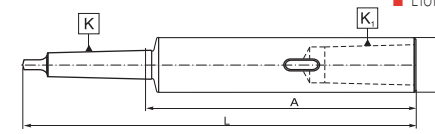
Artikel Nr.	K MK	K ₁ MK	L	A	D
Code No.	K MT	K ₁ MT			
800000334	1	1	145	83,0	20
800000335	1	2	160	98,0	30
800000336	1	3	183	121,0	36
800000337	2	1	160	85,0	20
800000338	2	2	175	100,0	30
800000339	2	3	196	121,0	36
800000340	2	4	221	146,0	48
800000341	3	1	175	81,0	20
800000342	3	2	194	100,0	30
800000343	3	3	215	121,0	36
800000344	3	4	240	146,0	48
800000345	3	5	275	181,0	63
800000346	4	1	200	82,5	20
800000347	4	2	215	97,5	30
800000348	4	3	240	122,5	36

Artikel Nr.	K MK	K ₁ MK	L	A	D
Code No.	K MT	K ₁ MT			
800000349	4	4	265	147,5	48
800000350	4	5	300	182,5	63
800000351	4	6	361	243,5	82
800000352	5	1	232	82,5	20
800000353	5	2	247	97,5	30
800000354	5	3	268	118,5	36
800000355	5	4	300	150,5	48
800000356	5	5	335	185,5	63
800000357	5	6	396	246,5	82
800000358	6	1	294	84,0	20
800000359	6	2	309	99,0	30
800000360	6	3	330	120,0	36
800000361	6	4	355	145,0	48
800000362	6	5	390	180,0	63
800000363	6	6	451	241,0	82



1764

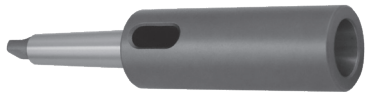
- Verlängerungshülsen für Werkzeuge mit MK-Schaft
- Elongating sleeves for Morse tapers



* Kompletzt gehärtet, innen und außen geschliffen
* completely hardened, grounded internally and externally

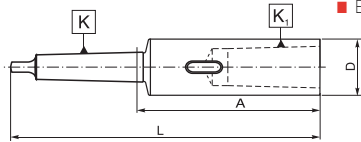
Artikel Nr.	K MK	K ₁ MK	L	A	D
Code No.	K MT	K ₁ MT			
800000394	1	1	200	138,0	20
800000395	1	1	250	188,0	20
800000396	1	1	300	238,0	20
800000397	1	1	350	288,0	20
800000398	1	1	400	338,0	20
800000399	1	1	450	388,0	20
800000400	1	1	500	438,0	20
800000401	2	2	200	125,0	25
800000402	2	2	250	175,0	25
800000403	2	2	300	225,0	25
800000404	2	2	350	275,0	25
800000405	2	2	400	325,0	25
800000406	2	2	450	375,0	25
800000407	2	2	500	425,0	25

Artikel Nr.	K MK	K ₁ MK	L	A	D
Code No.	K MT	K ₁ MT			
800000408	2	2	600	525,0	25
800000409	3	3	250	156,0	32
800000410	3	3	300	206,0	32
800000411	3	3	350	256,0	32
800000412	3	3	400	306,0	32
800000413	3	3	450	356,0	32
800000414	3	3	500	406,0	32
800000415	3	3	600	506,0	32
800000416	4	4	300	182,5	40
800000417	4	4	350	232,5	40
800000418	4	4	400	282,5	40
800000419	4	4	450	332,5	40
800000420	4	4	500	382,5	40
800000421	4	4	600	482,5	40



1762

- Adapterhülsen für Werkzeuge mit MK-Schaft
- Extension sleeves for Morse tapers



* Führungsfläche gehärtet, innen und außen geschliffen
* only tang is hardened, grounded internally and externally

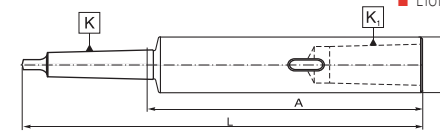
Artikel Nr.	K MK	K ₁ MK	L	A	D
Code No.	K MT	K ₁ MT			
800000364	1	1	145	83,0	20
800000365	1	2	160	98,0	30
800000366	1	3	183	121,0	36
800000367	2	1	160	85,0	20
800000368	2	2	175	100,0	30
800000369	2	3	196	121,0	36
800000370	2	4	221	146,0	48
800000371	3	1	175	81,0	20
800000372	3	2	194	100,0	30
800000373	3	3	215	121,0	36
800000374	3	4	240	146,0	48
800000375	3	5	275	181,0	63
800000376	4	1	200	82,5	20
800000377	4	2	215	97,5	30
800000378	4	3	240	122,5	36

Artikel Nr.	K MK	K ₁ MK	L	A	D
Code No.	K MT	K ₁ MT			
800000379	4	4	265	147,5	48
800000380	4	5	300	182,5	63
800000381	4	6	361	243,5	82
800000382	5	1	232	82,5	20
800000383	5	2	247	97,5	30
800000384	5	3	268	118,5	36
800000385	5	4	300	150,5	48
800000386	5	5	335	185,5	63
800000387	5	6	396	246,5	82
800000388	6	1	294	84,0	20
800000389	6	2	309	99,0	30
800000390	6	3	330	120,0	36
800000391	6	4	355	145,0	48
800000392	6	5	390	180,0	63
800000393	6	6	451	241,0	82



1765

- Verlängerungshülsen für Werkzeuge mit MK-Schaft
- Elongating sleeves for Morse tapers



* Führungsfläche gehärtet, innen und außen geschliffen
* only tang is hardened, grounded internally and externally

Artikel Nr.	K MK	K ₁ MK	L	A	D
Code No.	K MT	K ₁ MT			
800000422	1	1	200	138,0	20
800000423	1	1	250	188,0	20
800000424	1	1	300	238,0	20
800000425	1	1	350	288,0	20
800000426	1	1	400	338,0	20
800000427	1	1	450	388,0	20
800000428	1	1	500	438,0	20
800000429	2	2	200	125,0	25
800000430	2	2	250	175,0	25
800000431	2	2	300	225,0	25
800000432	2	2	350	275,0	25
800000433	2	2	400	325,0	25
800000434	2	2	450	375,0	25
800000435	2	2	500	425,0	25

Artikel Nr.	K MK	K ₁ MK	L	A	D
Code No.	K MT	K ₁ MT			
800000436	2	2	600	525,0	25
800000437	3	3	250	156,0	32
800000438	3	3	300	206,0	32
800000439	3	3	350	256,0	32
800000440	3	3	400	306,0	32
800000441	3	3	450	356,0	32
800000442	3	3	500	406,0	32
800000443	3	3	600	506,0	32
800000444	4	4	300	182,5	40
800000445	4	4	350	232,5	40
800000446	4	4	400	282,5	40
800000447	4	4	450	332,5	40
800000448	4	4	500	382,5	40
800000449	4	4	600	482,5	40